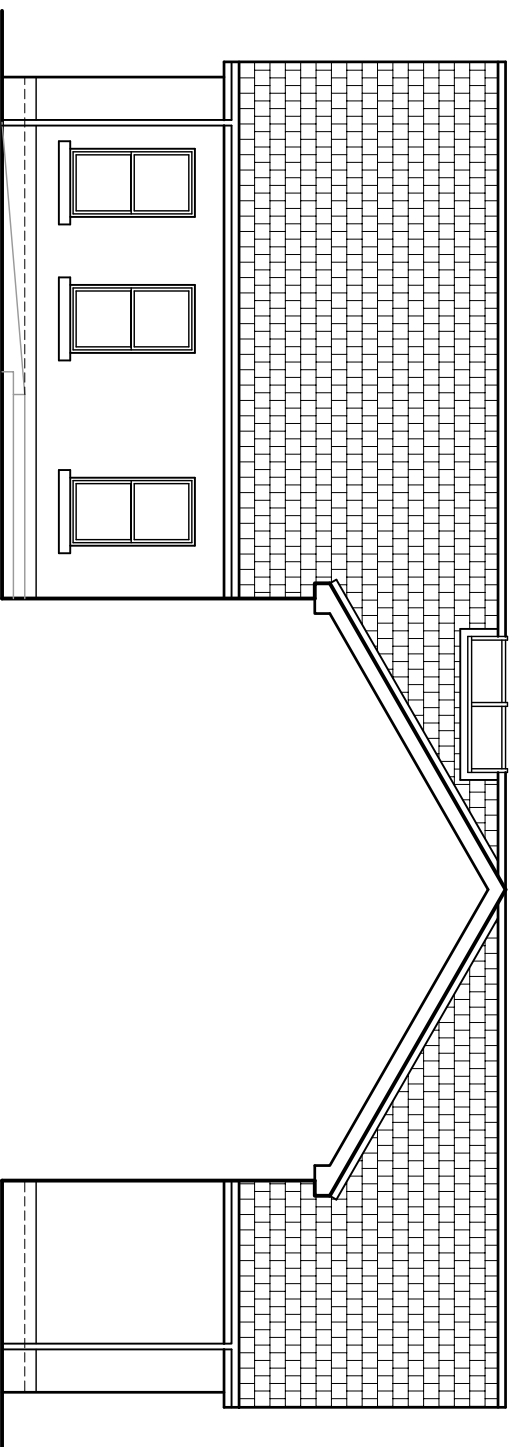
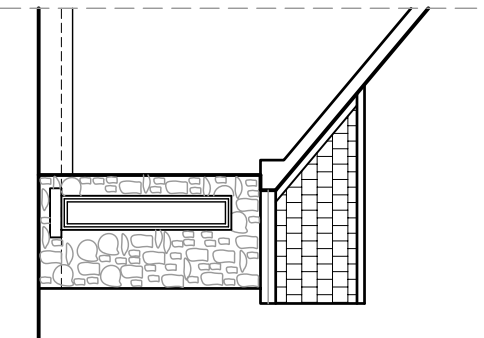


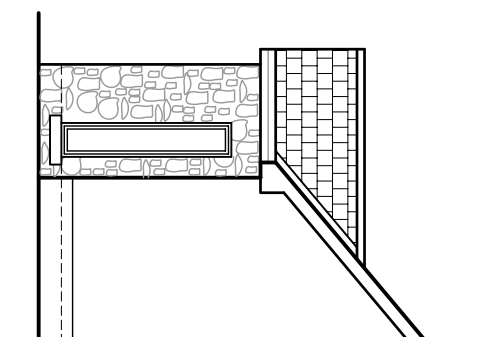
.....part elevation 1



.....part elevation 2



.....part elevation 3



.....part elevation 4

- .....external finishes
- roof**  
BANGOR BLUE SLATES
  - walls**  
K REIND OFF WHITE COLOUR  
NATURAL STONE
  - windows**  
BLACK UPVC DOUBLE GLAZED
  - fascia and soffits**  
BLACK UPVC

planning changes 3 june 09  
clients changes 15 april 09  
**revisions**  
**a**

**.....david haire**  
architectural design

46 avenue rd lurgan bt66 7bd  
T: 38 344322 M: 07900 278696  
email : info@davidhaire.co.uk

**title**  
proposed new dwelling and detached garage  
60m sw of 104 killysorei rd dromore  
for maldaig developments

**project**  
dwelling part elevations

1 : 100  
july 09  
08-151-06  
**scale**  
**date**  
**dwg**